



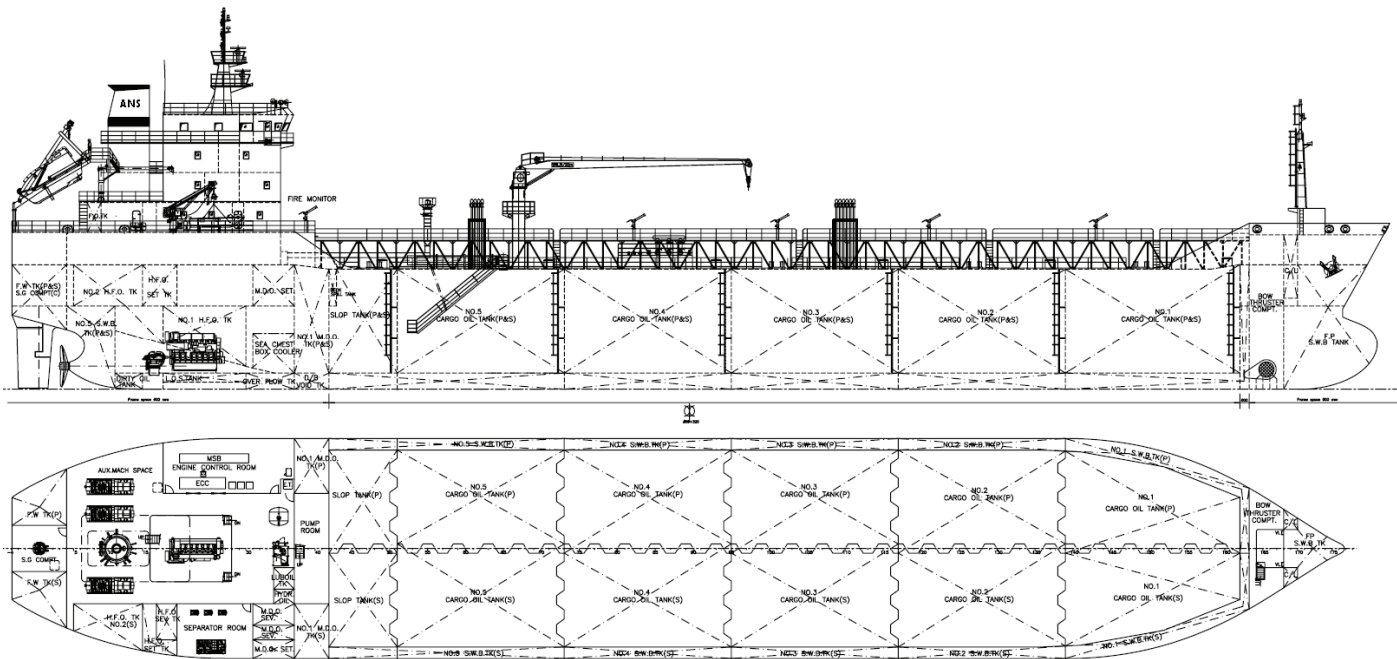
ANS 95 Class *Product Tanker*

DESCRIPTION

Singel screw Double Hull Oil/Chemical Tanker. Ship design to fully load cargo with specific gravity up to 1.025 mt/m³ and flash point below 60°C Ships fitted with 12 cargo oil tanks. Cargo unloading/loading capacity is 500 m³/h at 380cst, 50°C. The ship is able to load/unload four different grades of cargo simultaneously. Bow thruster fitted. Crew complement 20 persons.

BUILT Zhejiang Jingang Shipbuilding, P.R.China
FLAG Panama
HOME PORT Panama
CLASS BV 1+ Oil Tanker ESP, Flash point < 60°C, +MACH, Unrestricted Navigation, MON-SHAFT, AUT-UMS
MANAGERS/AGENTS Norbulk (UK) Ltd, 68 Glassford Street, Glasgow G1 1UP
 Tel: +44 141 552 3000 / Fax: +44 141 559 5250
 mail@norbulkshipping.com

THE FLEET	BUILT
ANUKET OPAL	2008
ANUKET TOPAZ	2008
ANUKET AMBER	2008
ANUKET IVORY	2008



TONNAGES

- DWT: about 9500
- GT/NT: 6952/2704
- Panama -
- Suez-

DIMENSIONS

- LOA: 122,2m
- LPP: 116,0m
- Beam: 19,5m
- T: 10,5 m
- Max Air Draft,t: 28,5m

TANK CAPACITIES

- Cargo tanks (98% full) 1200 mt
- Fuel (HFO+DO) 600 mt
- Fresh Water (98% full) 190 mt
- Water Ballast 3800 mt

BOILER

- Oil fired boiler 6,5 mt/h at 7 BAR
- Exhaust boiler 1,0 mt/h at 7 BAR

MAIN ENGINE

- 1 x MAK 9M32
- MCR 4320 kW / 600 RPM

GENERATORS

- Auxiliaries: 3 x 450 kW

SPEED & CONSUMPTION

- About 13,8 knots on about 16,0 t IFO 380cst/24 h
- Port consumption About 3,0 mt MGO while discharging, at sea 1,5 mt MGO
- Endurance: 9900 nm