



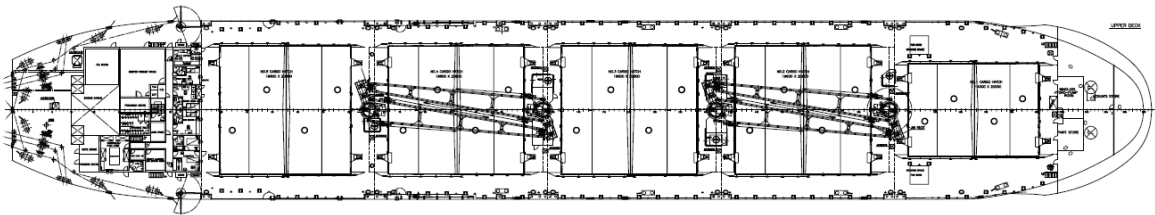
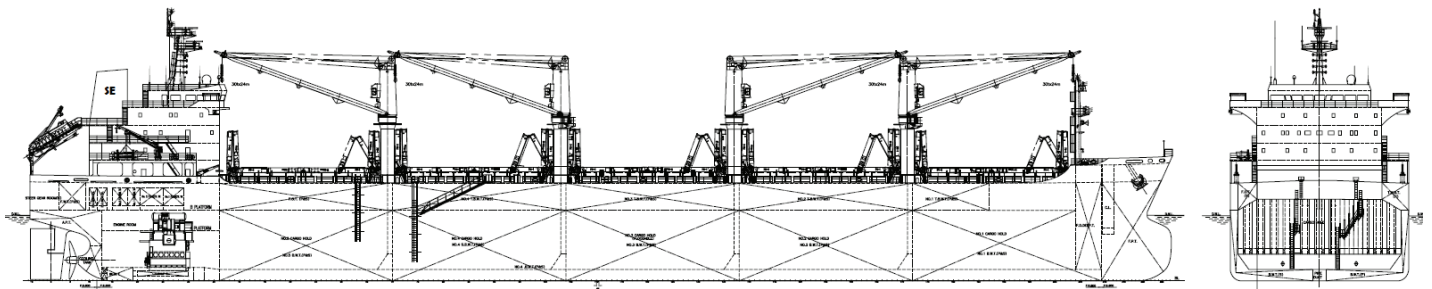
SE 335 Class *Bulk Carrier*

DESCRIPTION

Single screw double skin Bulk Carrier for unrestricted world wide service. Ship is designed to carry Dangerous Cargo. The vessel is strengthened for the carriage of heavy cargoes. Crew complement 25 persons.

BUILT P.R. China
FLAG TBA
HOME PORT TBA
CLASS BV 1+ Bulk Carrier ESP ; CSR ; BC-A (Hold 2, 4 empty); Veristar; Unrest. Nav; +MC AUT-UMS; Inwatersurvey.
MANAGERS/AGENTS Norbulk (UK) Ltd, 68 Glassford Street, Glasgow G1 1UP
 Tel: +44 141 552 3000 / Fax: +44 141 559 5250
EMAIL mail@norbulkshipping.com

THE FLEET	BUILT
NB 1	2010
NB 2	2010
NB 3	2011
NB 4	2011



TONNAGES

- DWT: about 33,500
- GT/NT: 22,100/11,150
- Panama -
- Suez-

DIMENSIONS

- LOA: 179,5m
- LPP: 172,0m
- Beam: 28,0m
- Depth mld: 15,2m
- Design draft: 9,5m
- Scantling draft: 10,65m
- Max Air Draft: 59,8m

TANK CAPACITIES

- Fuel (HFO+DO) 930 mt
- Fresh Water (98% full) 180 mt
- Water Ballast 9040 mt

BOILER

- Oil fired boiler 1,2mt/h at 7 BAR
- Exhaust boiler 0,9mt/h at 7 BAR

MAIN ENGINE

- 1 x MAN B&W 6S42MC
MCR 6480 kW / 136 RPM

GENERATORS

- Auxiliaries: 3 x 510 kW

SPEED & CONSUMPTION

- About 14,0 knots on about 26,0 t IFO 380cst/24 h laden condition.
- About 14,0 knots on about 21,0 t IFO 380cst/24 h ballast condition.
- Port consumption Idle/Working 3,0/6,0 mt MDO.
- Endurance: 9000 nm

Cargo Hold Cap.	Bale (98%)	Grain (100%)	Tank top strength	Hatch cover strength	Hatch size m ³
Hold 1	7480 m ³	7570 m ³	23MT/m ³	2,5MT/m ³	14,0x20,0
Hold 2	9270	9460	23	2,5	19,6x20,8
Hold 3	9270	9460	23	2,5	19,6x20,8
Hold 4	9270	9460	23	2,5	19,6x20,8
Hold 5	7890	8050	23	2,5	19,6x20,8